



MRX920™

MOBILE DATA COLLECTOR



The MRX920™ unit can be easily and safely installed in almost any vehicle within minutes.

Neptune's MRX920™ is a rugged, portable, easy-to-use automatic meter reading device. Within minutes, the MRX920 can be securely placed in the passenger seat of any vehicle with a standard seat belt and powered via the vehicle power source.

Data transmitted by R900® radio frequency (RF) meter interface units (MIUs) is received and stored by the MRX920 mobile data collector. Information can be quickly uploaded to Neptune's host meter reading software at the utility office. The host software transfers the customer information to the Customer Information System (CIS) to generate customer bills.

The MRX920 unit also captures the advanced features of the E-Coder® solid state absolute encoder register connected to an R900 MIU*. These features include leak detection, tamper detection, and reverse flow indication.

The carrying case neatly and securely holds the power cord, magnetic-based antenna, rugged laptop PC, and the MIU signal receiving/processing unit.

MX900 software is designed to significantly reduce the time required to collect and process meter reading data while increasing meter reader safety and efficiency. It utilizes menu-driven commands to allow the user to effortlessly control all aspects of the meter reading process. No operator intervention is necessary once data collection has started. At any time, the operator can view either read or unread accounts with a touch of the screen.

UTILITY ADVANTAGES

The MRX920 unit provides the meter reading industry with many advantages over other existing AMR systems:

- Improves meter reading accuracy
- Addresses "hard-to-read" meters
- Reads all meters loaded regardless of which route is displayed
- Increases meter reader safety
- Reduces man-hours needed to collect and process meter reading information
- Suits any size utility
- Portable and easy to set up

KEY FEATURES

- Digital signal processing for improved meter reading throughput
- Portable for use in any vehicle
- Low power consumption
- Intuitive graphical user interface
- Supports E-Coder advanced features**
- Supported by a courteous and knowledgeable Customer Support Center
- GPS mapping
- Wireless loading/unloading of routes

KEY BENEFITS

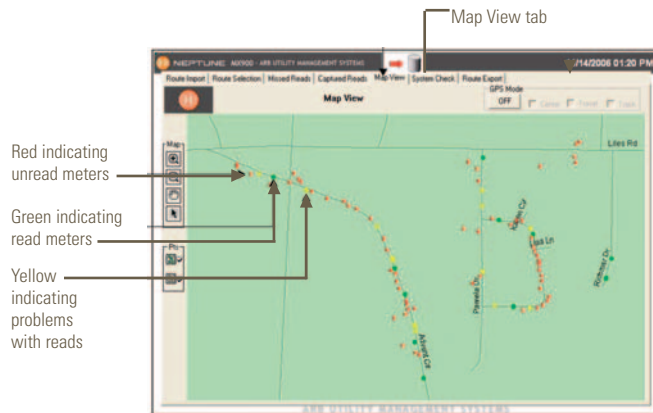
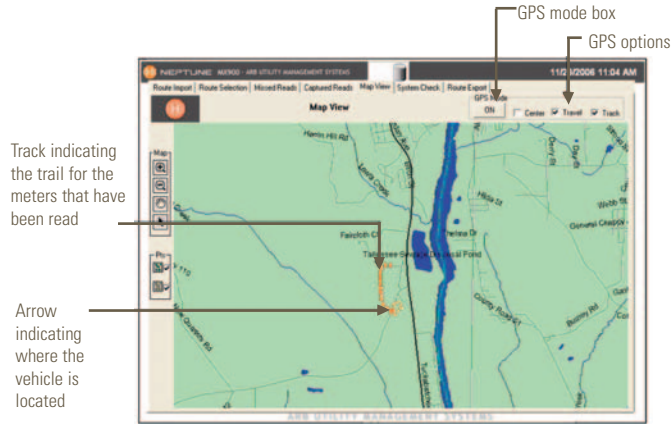
- Reads up to eight meters simultaneously and can process 70 unique meter readings per second
- Maximizes meter reading success rates and overall field and office efficiency
- Reduces potential liability to utility through improved meter reader safety
- Does not require a special or customized vehicle
- Operates from standard 12V DC vehicle power source (i.e., cigarette lighter)
- Will support leak detection, tamper detection, and reverse flow indication
- Courteous, prompt, and conscientious Support Specialists available if needed

* When connected to second generation R900 or later.

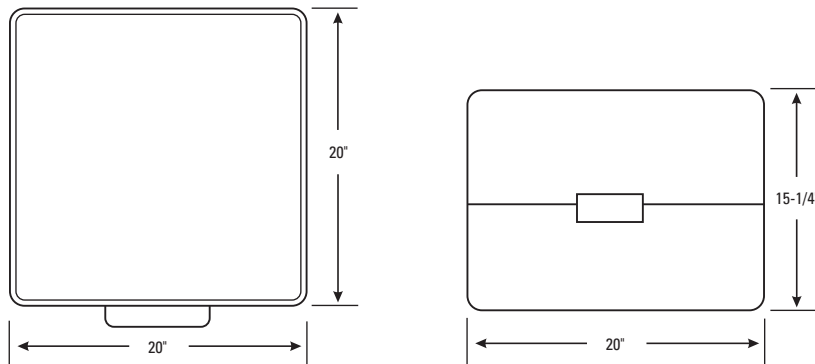
** Indication of E-Coder

The MX900 mobile data collection software provides an optional GPS mapping view. The map view allows the operator to monitor route completion by visually determining unread accounts which are represented as colored objects on the map. The operator can stop along the route anytime it is safe to do so and monitor each route loaded into the data collector. As an added feature, the MX900 also allows the operator to view special conditions that may exist in the route.

Conditions such as Hi/Lo alarms and tamper alarms are also visible to the operator. For those utilities with Neptune E-Coder equipped meters, value-added warning flags such as leak detection are also available. This optional mapping package can be ordered with or added to any existing MRX920 mobile data collector. Adding the optional mapping solution could not be easier as no additional hardware is required.



DIMENSIONS



SPECIFICATIONS

- Electrical Specifications:
 - Power consumption: 9A
 - Power supply: 12V DC via vehicle power source adapter
 - FCC compliance: FCC verification: Part 15
- Rugged Laptop PC (Intel Pentium 1.83 GHz):
 - Fully waterproof NiteVue™ glow-in-the-dark keyboard
 - Full-sized 87-key sealed keyboard
 - Three easily accessed USB ports for route import/export
 - Display
 - 12.1" TFT XGA outdoor
 - DynaVue™ outdoor viewable display
 - Display heater for cold weather conditions
 - Touch screen
- Fully Integrated GPS
- 802.11 a/b/g wireless network connections for wireless import/export
- Operating system
 - Windows XP Professional, Service Pack 2
- Environmental Conditions:
 - Operating temperature: 32° to 122° F (0° to 50° C)
 - Storage temperature: -40° to 185° F (-40° to 85° C)
 - Operating humidity: 5 to 95% non-condensing relative humidity
- Physical Specifications
 - Shipping weight: 48 lbs

Neptune Technology Group Inc.
 1600 Alabama Highway 229
 Tallahassee, AL 36078
 USA
 Tel: (800) 645-1892
 Fax: (334) 283-7299

Neptune Technology Group (Canada) Ltd.
 7275 West Credit Avenue
 Mississauga, Ontario
 L5N 5M9
 Canada
 Tel: (905) 858-4211
 Fax: (905) 858-0428

Neptune Technology Group Inc.
 Ejército Nacional No. 418
 Piso 12, Desp. 1201-1202
 Col. Chapultepec Morales
 Delegación Miguel Hidalgo
 11570 México, Distrito Federal
 Tel: (525) 55203 5294 / (525) 55203 5708
 Fax: (525) 55203 6503

